



VERSA®

2024



¹2024 EPA Fuel Economy Estimates. 27 City MPG / 35 Highway MPG / 30 Combined MPG for Versa® with Manual Transmission. 32 City MPG / 40 Highway MPG / 35 Combined MPG for Versa with Xtronic CVT®. Actual mileage may vary with driving conditions. Use for comparison only. ²Driving is serious business and requires your full attention. If you have to use the connected device while driving, exercise extreme caution at all times so full attention may be given to vehicle operation. ³Availability of features vary by vehicle model year, model, trim level, packaging, and options. ⁴Intelligent Cruise Control uses limited braking and is not a collision avoidance or warning system. Driver should monitor traffic conditions and brake as needed to prevent collisions. See Owner's Manual for safety information. ⁵Information displayed is dependent on how vehicle is equipped. Driving is serious business and requires your full attention. If you have to use the feature while driving, exercise extreme caution at all times so full attention may be given to vehicle operation. ⁶Use feature only when safe and legal. Compatible device and service required. Subject to third party service availability. For more information, see [NissanUSA.com/connect/legal](https://www.nissanusa.com/connect/legal). ⁷Never program while driving. GPS mapping may not be detailed in all areas or reflect current road status. ⁸Use Hands Free Text Messaging when parked in a safe location. If you must use while driving, monitor traffic conditions and keep both hands on the steering wheel to prevent collisions. Compatible device required. Message and data rates may apply. ⁹Available feature. ¹⁰Nissan Safety Shield technologies can't prevent all collisions or warn in all situations. See Owner's Manual for important safety information. ¹¹Automatic Emergency Braking with Pedestrian Detection cannot prevent all collisions and may not provide warning or braking in all conditions. Driver should monitor traffic conditions and brake as needed to prevent collisions. See Owner's Manual for safety information. ¹²Rear Automatic Braking cannot prevent all collisions and may not provide warning or braking in all conditions. Driver should always turn and check surroundings before driving and brake as needed to prevent collisions. See Owner's Manual for safety information. ¹³Blind Spot Warning cannot prevent collisions and may not detect every object or warn in all situations. Driver should always turn and look before changing lanes. See Owner's Manual for safety information. ¹⁴Rear Cross Traffic Alert may not detect all vehicles. See Owner's Manual for safety information. ¹⁵Lane Departure Warning only operates when lane markings are able to be detected. See Owner's Manual for safety information. ¹⁶Cargo shown for display purposes only. Cargo and load capacity limited by weight and distribution. Always secure cargo. ¹⁷Extra cost option. ¹⁸RearView Monitor may not detect every object and does not eliminate blind spots or warn of moving objects. See Owner's Manual for safety information. ¹⁹Air bags are only a supplemental restraint system. Always wear your seat belt. Rear-facing child restraints should not be placed in the front-passenger's seat. All children 12 and under should ride in the rear seat properly secured in child restraints, booster seats, or seat belts according to their size. Air bags will only inflate in certain accidents. See Owner's Manual for safety information. ²⁰Tire Pressure Monitoring System is not a substitute for regular tire pressure checks. See Owner's Manual for safety information. ²¹Vehicle must be on for the Easy-Fill Tire Alert to operate. ²²Intelligent Driver Alertness cannot provide a warning in every situation. See Owner's Manual for safety information. ²³Rear Door Alert System does not detect people or cargo. Always check rear seat before exiting. See Owner's Manual for safety information. ²⁴Remote Engine Start System to be used only in accordance with laws or rules in effect in your vehicle's location. ²⁵For complete information concerning warranty coverage, conditions, limitations, and exclusions, see your Nissan dealer, [parts.NissanUSA.com](https://www.nissanusa.com/parts), or read your vehicle's Warranty Information Booklet. ²⁶Compatible smartphone required. Virtual Key to be used only in accordance with laws or rules in effect in your vehicle's location. Actual maximum distance for operation will vary depending on obstructions between compatible device and vehicle. ²⁷Vehicle shown is for illustrative purposes only. Not representative of brochure's model year/model. ²⁸Dual Camera Drive Recorder to be used only in accordance with any laws or rules in effect in your vehicle's location that may apply to audio or video recordings of drivers and passengers. ²⁹Brake Assist cannot prevent all collisions and may not provide warning or braking in all conditions. Driver should monitor traffic conditions and brake as needed to prevent collisions. See Owner's Manual for safety information. ³⁰Vehicle Dynamic Control cannot prevent collisions due to abrupt steering, carelessness, or dangerous driving techniques. It should remain on when driving, except when freeing the vehicle from mud or snow. See Owner's Manual for safety information. ³¹Roadside assistance coverage period varies by model year/model. For complete information concerning warranty coverage, conditions and exclusions, see your Nissan dealer and read the warranty information booklet for the model year/model. ³²Only front kick plates illuminate. ³³Driving is serious business and requires your full attention. Do not operate any devices connected to the power outlets while driving. Apple®, Apple CarPlay®, Apple Music®, Lightning®, Siri®, and Siri® Eyes Free are registered trademarks of Apple, Inc. Bluetooth® word mark and logos are owned by Bluetooth SIG, Inc., and any use of such marks by Nissan is under license. Google, Android, Android Auto, Google Maps and other marks are trademarks of Google LLC. Google Assistant is not available in certain languages and countries. To use Android Auto on your car display, you'll need an Android phone running Android 8 or higher, an active data plan, and the Android Auto app. Instagram® is a registered trademark of Instagram, LLC. iPhone® is a registered trademark of Apple, Inc. All rights reserved. iPhone® or other external device not included. The Sirius®, XM®, and SiriusXM® names and all related marks and logos are trademarks of Sirius XM Radio Inc. All other trademarks are the property of their respective owners. Twitter® is a registered trademark of Twitter, Inc. This brochure is intended for general descriptive and informational purposes only. It is subject to change and does not constitute an offer, representation or warranty (express or implied) by Nissan North America, Inc. Interested parties should confirm the accuracy of any information in this brochure as it relates to a vehicle directly with Nissan North America, Inc. before relying on it to make a purchase decision. Nissan North America, Inc. reserves the right to make changes, at any time, without prior notice, in prices, colors, materials, equipment, specifications, and models and to discontinue models or equipment. Due to continuous product development and other pre- and post-production factors, actual vehicle, materials and specifications may vary from this brochure. Some vehicles shown with optional equipment. See the actual vehicle for complete accuracy. Availability and delivery times for particular models or equipment may vary. Specifications, options and accessories may differ in Hawaii, U.S. territories and other countries. For additional information on availability, options or accessories, see your Nissan dealer or contact Nissan North America, Inc. At [NissanUSA.com](https://www.nissanusa.com), you'll find virtual product demonstrations, a way to "build your own Nissan," a dealer locator, and more information about key Nissan support services. Or if you'd prefer, call **1-800-NISSAN-3** for answers to specific questions about Versa® or any other Nissan vehicle. The Nissan names, logos, product names, feature names, and slogans are trademarks owned by or licensed to Nissan Motor Co. Ltd. and/or its North American subsidiaries. Other trademarks and trade names are those of their respective owners. **Always wear your seat belt, and please drive responsibly.** ©2023 Nissan North America, Inc. ²⁴Versa®. 2417158-N-9/23-70K-KSL



Dare to settle for more

There's no better time to jump to the next level. The sharp-handling Versa® dares you to reach higher with its striking looks, wallet-friendly EPA-estimated mpg numbers,¹ and an astounding selection of available next-gen connectivity, safety technology, and driver assist features.^{2,3} Your time has come. Your time is now. Meet the Nissan Versa.



High tech takes center stage



People to see? Places to be? Just ask Siri.® Equipped with Siri® voice control, Apple CarPlay® (shown above) brings on board to your Versa your contacts, favorite messaging apps, Apple Music® playlists, Apple Maps, and more. Simply plug in your compatible iPhone® and go.^{2, 6, 7, 8, 9}

Talk to Google Assistant on Android Auto™ and get things done with your voice. Easily send messages, get directions, control media and more. Just say, "Hey Google" or, in compatible cars, long-press the voice control button on your steering wheel to get started.^{2, 6, 7, 8, 9}

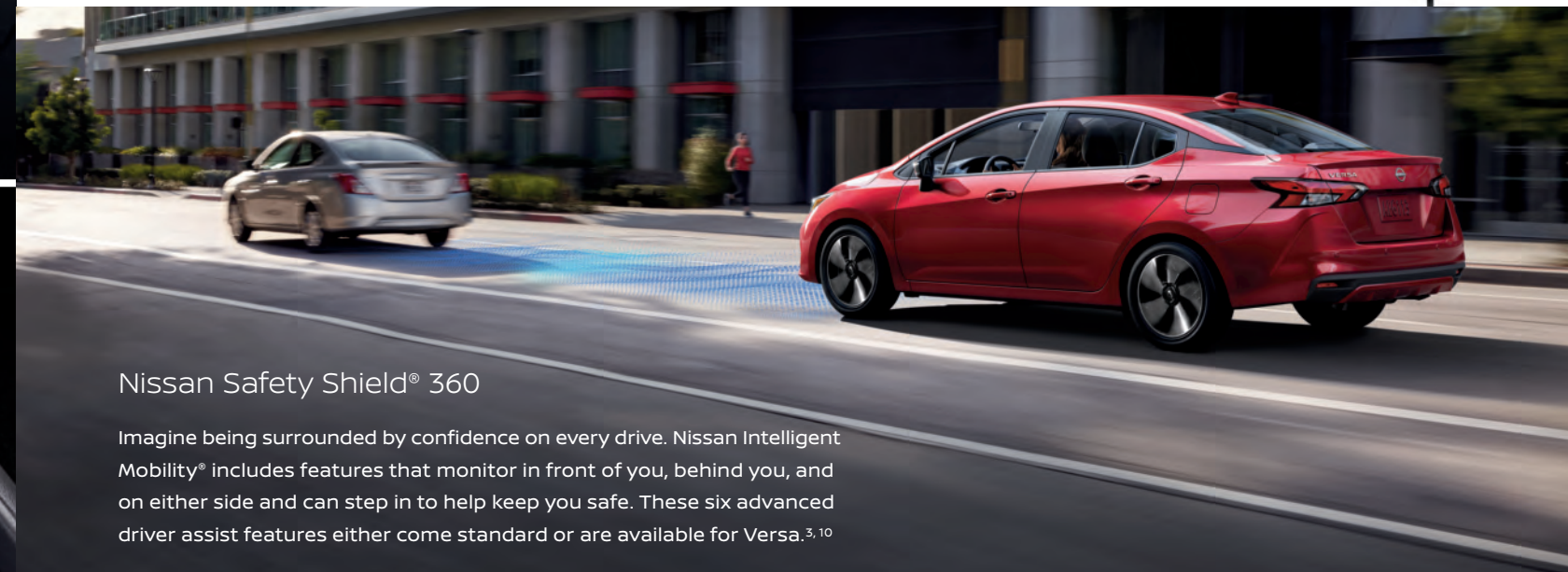


Sync into your world

Behind the wheel, Versa® is seamless, intuitive, and effortless. Set your speed and go with the flow of traffic with available Intelligent Cruise Control. Keep track of songs, incoming calls, trip data, and more with the available 7" Advanced Drive-Assist® Display.^{4, 5}

Wireless, effortless

Keep your compatible device charged up the easiest way possible — with available wireless charging. Simply place your compatible smartphone in the designated area to begin charging.²



Nissan Safety Shield® 360

Imagine being surrounded by confidence on every drive. Nissan Intelligent Mobility® includes features that monitor in front of you, behind you, and on either side and can step in to help keep you safe. These six advanced driver assist features either come standard or are available for Versa.^{3, 10}

Automatic Emergency Braking with Pedestrian Detection¹¹

Rear Automatic Braking¹²

Blind Spot Warning^{9, 13}

Rear Cross Traffic Alert^{9, 14}

Lane Departure Warning¹⁵

High Beam Assist

Go the distance and then some

Versa® sips fuel sparingly, returning up to an exceptional EPA-estimated 40 highway mpg¹ fuel economy, but still has plenty of punch around town and when merging on the freeway.

up to
32 city mpg¹



up to
40 hwy mpg¹

Every inch goes the extra mile

When you need more room for cargo, the available 60/40-split fold-down rear seats let you add some gear with a rear passenger still aboard. Or fold both seats down for even more possibilities.¹⁶



All you in full view

From the moment you get in, you'll feel like you've been upgraded. Impressive fit and finish, smart design, and available tech you might find in some luxury vehicles all add up to your everyday "wow" moment.

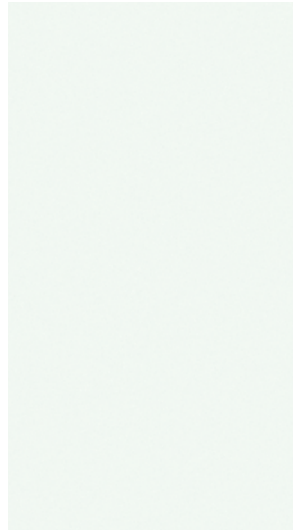
D-shaped steering wheel

Larger 8" touch-screen display^{6,9}

Contrast dash stitching⁹

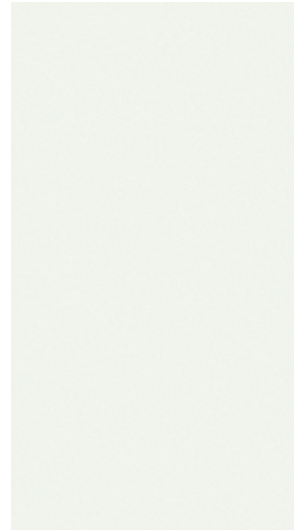
Wireless charger^{2,9}

CHOOSE YOUR COLOR



Fresh Powder

S SV SR



Aspen White TriCoat¹⁷

S SV SR



Brilliant Silver Metallic

S SV SR



Gun Metallic

S SV SR

Charcoal Cloth	<input checked="" type="checkbox"/>		
Graphite Premium Cloth		<input checked="" type="checkbox"/>	
Charcoal Sport Cloth			<input checked="" type="checkbox"/>

		<input checked="" type="checkbox"/>	
			<input checked="" type="checkbox"/>

<input checked="" type="checkbox"/>			
	<input checked="" type="checkbox"/>		

<input checked="" type="checkbox"/>			
		<input checked="" type="checkbox"/>	



Gray Sky Pearl¹⁷

S SV SR



Scarlet Ember Tintcoat¹⁷

S SV SR



Electric Blue Metallic

S SV SR



Super Black

S SV SR

Standard

Nissan has taken care to ensure that the color swatches presented here are the closest possible representations of actual vehicle colors. Swatches may vary slightly due to the printing process and whether viewed in daylight, fluorescent or incandescent light. Please see the actual colors at your Nissan dealer.

Charcoal Cloth			
Graphite Premium Cloth		<input checked="" type="checkbox"/>	
Charcoal Sport Cloth			<input checked="" type="checkbox"/>

		<input checked="" type="checkbox"/>	
			<input checked="" type="checkbox"/>

<input checked="" type="checkbox"/>			
	<input checked="" type="checkbox"/>		

<input checked="" type="checkbox"/>			
		<input checked="" type="checkbox"/>	

CHOOSE YOUR INTERIOR



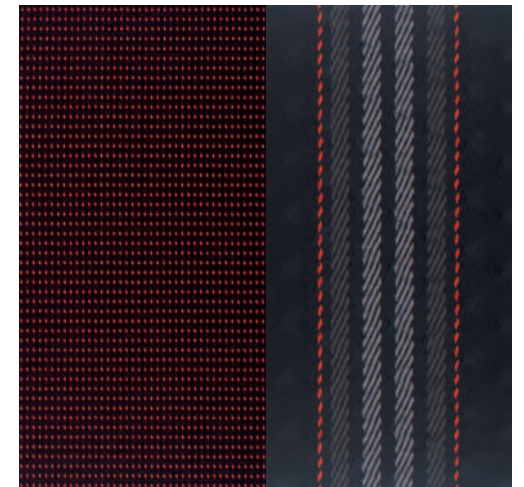
Nissan Versa[®] SR shown in Charcoal Sport Cloth.



Charcoal Cloth
S



Graphite Premium Cloth
SV



Charcoal Sport Cloth
SR

CHOOSE YOUR TRIM LEVEL

S

- 122-hp 1.6-liter DOHC 4-cylinder engine
- 5-speed manual transmission
- Available Xtronic CVT® (Continuously Variable Transmission)
- Automatic Emergency Braking with Pedestrian Detection¹¹
- Rear Automatic Braking¹²
- Lane Departure Warning¹⁵
- High Beam Assist
- RearView Monitor¹⁸
- 7" Color touch-screen display
- Bluetooth® Hands-free Phone System⁶
- Streaming Audio via Bluetooth⁶
- Siri® Eyes Free⁶
- AM/FM audio system with four speakers
- Voice Recognition⁷
- Hands-free Text Messaging Assistant⁸
- Cruise control
- Air conditioning with in-cabin microfilter
- Sun visors with vanity mirrors and extensions
- V-Motion grille with chrome accents
- Cloth seat trim
- Matte carbon-fiber look interior door trim
- Nissan Advanced Air Bag System with dual-stage supplemental front air bags¹⁹
- Seat-mounted driver and front-passenger side-impact supplemental air bags¹⁹
- Seat-mounted rear-passenger side-impact supplemental air bags¹⁹
- Driver and front-passenger supplemental knee air bags¹⁹
- Roof-mounted curtain side-impact supplemental air bags for front- and rear-seat outboard occupant head protection¹⁹
- Tire Pressure Monitoring System (TPMS) with Easy-Fill Tire Alert^{20, 21}



KEY AVAILABLE PACKAGE:

- S+ Package

SV INCLUDES S EQUIPMENT PLUS:

- 16" Aluminum-alloy wheels
- 7" Advanced Drive-Assist® Display⁵
- NissanConnect® 7" color touch-screen display⁶
- Apple CarPlay® integration⁶
- Android Auto™ compatibility⁶
- Wireless charger²
- Blind Spot Warning¹³
- Rear Cross Traffic Alert¹⁴
- Nissan Intelligent Key® with Push Button Ignition
- Body-color outside mirrors
- Body-color exterior door handles
- Center console with armrest and storage
- Chrome interior door handles
- 60/40-split fold-down rear seatbacks
- Intelligent Driver Alertness²²
- Rear Door Alert²³
- Premium cloth seat trim



SR INCLUDES SV EQUIPMENT PLUS:

- 17" Machine-finished aluminum-alloy wheels
- LED headlights with LED signature
- Black-painted heated outside mirrors with LED turn signal indicators
- Intelligent Cruise Control⁴
- NissanConnect® 8" color touch-screen display⁶
- NissanConnect® Services powered by SiriusXM with trial access to 5-year Select and 3-year Premium packages⁶
- AM/FM audio system with six speakers
- SiriusXM with 3-month trial access included⁶
- Leather-wrapped steering wheel
- Heated front seats
- Prima-Tex®-appointed dash trim
- Sport cloth seat trim
- Nissan Intelligent Key® with Push Button Ignition and front-door request switch
- Remote Engine Start System with Intelligent Climate Control²⁴
- Automatic Temperature Control
- V-Motion grille with dark chrome accents
- Body-color rear spoiler



AVAILABLE PACKAGE

S S+ PACKAGE

- 16" Aluminum-alloy wheels
- NissanConnect® 7" color touch-screen display⁶
- Apple CarPlay® integration⁶
- Android Auto™ compatibility⁶
- 60/40-split fold-down rear seatbacks



GENUINE NISSAN ACCESSORIES

Tailor your thrill

Every Genuine Nissan Accessory is custom-fit, custom-designed, and durability-tested. Each one is backed by Nissan's 3-year/36,000-mile (whichever occurs first) limited warranty (if installed by dealer at the time of new vehicle purchase) and can be financed when installed by dealer at time of new vehicle purchase.²⁵



For more information and to shop online for Versa® Genuine Nissan Accessories, go to bit.ly/24Versa-Accys

Nissan Versa® SR shown in Scarlet Ember Tintcoat¹⁷ with Chrome Trunk Finisher, Exterior Ground Lighting w/ Logo, Side-Window Deflectors (4-piece set), Rear Spoiler (standard on SR), Clear Rear Bumper Protector, and Splash Guards (4-piece set).

CHOOSE YOUR ACCESSORIES

A. **Virtual Key²⁶**

The future of locking doors and starting your vehicle is here and access can even be given to up to 7 others with a compatible smart device.

B. **Dual Camera Drive Recorder^{27, 28}**

Keep a video record inside and outside your Versa for extra peace of mind.

C. **All-Season Floor Mats (4-piece set)**

Step in some rain or snow? Bring it on. These custom-designed floor mats stay in place and are made of a durable and long-wearing material.

D. **All-Season Trunk Area Protector**

Help keep the trunk area clean and protected with this water-resistant, heavy-duty rubber mat.

E. **Interior Accent Lighting, Door Pocket Lighting, and Illuminated Kick Plates³² (sold separately)**

Light up your drive with Illuminated Kick Plates, Door Pocket Lighting, and easy-to-control Interior Accent Lighting with 20 pre-programmed color options that illuminate your front foot wells.

F. **Center Armrest w/ Storage**

Added comfort, plus a convenient storage compartment that keeps items within reach and out of sight.

G. **USB Charging Cable Set²**

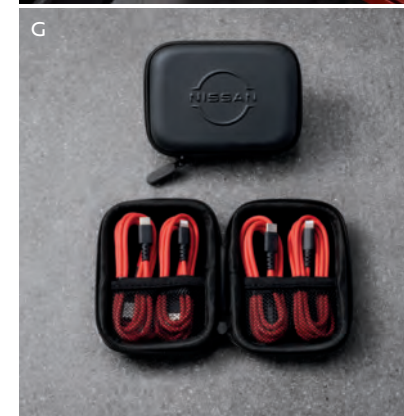
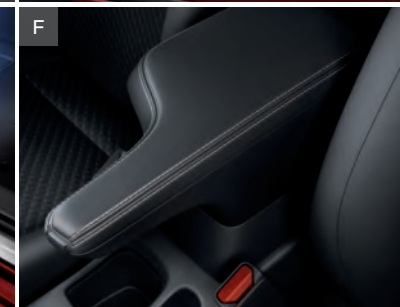
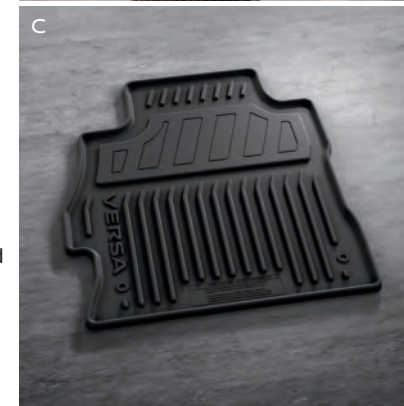
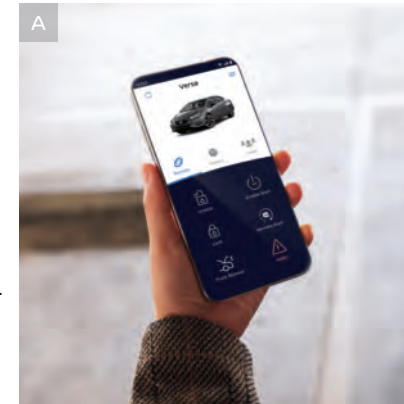
Say goodbye to broken and frayed cables. USB-A and USB-C connectors to support both charging port types. Lightning® and USB-C connectors for connecting to Apple® and Android™ devices.

H. **Sliding Trunk Organizer Tray**

Stay organized and prepared on every drive with a tray that slides out to make handling larger items a breeze.

Additional Accessories:

- Wireless Smartphone Charger²
- Trash Bin
- Frameless Rearview Mirror w/ Universal Remote
- Door Cup Paint Protection
- Front Sill Plate Protectors
- Hideaway Trunk Cargo Net¹⁶
- Removable Tote Cargo Organizer¹⁶
- Shopping Bag Hook¹⁶
- Wheel Locks
- And More



SPECIFICATIONS

Engine	S	SV	SR
1.6-liter DOHC 16-valve 4-cylinder engine	■	■	■
Horsepower — 122 hp @ 6,300 rpm			
Torque — 114 lb-ft of torque @ 4,000 rpm			
Continuously Variable Valve Timing Control System (CVTCS) on intake and exhaust valves	■	■	■
Sequential multi-point fuel injection	■	■	■
Nissan Direct Ignition System	■	■	■
Platinum-tipped spark plugs	■	■	■
Electronic drive-by-wire throttle	■	■	■

Drivetrain	S	SV	SR
Front engine/Front-Wheel Drive	■	■	■
5-speed manual transmission	■		
Xtronic CVT® (Continuously Variable Transmission)	□	■	■

Brakes	S	SV	SR
Front vented disc brakes/rear drum brakes	■	■	■
Anti-lock Braking System (ABS)	■	■	■
Electronic Brake force Distribution (EBD)	■	■	■
Brake Assist ²⁹	■	■	■

Suspension/Steering	S	SV	SR
Independent strut front suspension with stabilizer bar	■	■	■
Torsion beam rear suspension with integrated stabilizer bar	■	■	■
Electric power steering	■	■	■

Driver Assistance Technologies	S	SV	SR
Cruise control	■	■	
Intelligent Cruise Control ⁴			■
Automatic Emergency Braking with Pedestrian Detection ¹¹	■	■	■
Lane Departure Warning ¹⁵	■	■	■
High Beam Assist	■	■	■
Blind Spot Warning ¹³		■	■
Rear Cross Traffic Alert ¹⁴		■	■
RearView Monitor ¹⁶	■	■	■
Rear Automatic Braking ¹²	■	■	■
Hill start assist	■	■	■
Intelligent Driver Alertness ²²		■	■
Vehicle Dynamic Control (VDC) ³⁰ with Traction Control System (TCS)	■	■	■

Wheels/Tires	S	SV	SR
15" Steel wheels with full wheel covers	■		
16" Aluminum-alloy wheels	P	■	
17" Machine-finished aluminum-alloy wheels			■
195/65R15 All-season tires	■		
205/55R16 All-season tires	P	■	
205/50R17 All-season tires			■

Exterior Features	S	SV	SR
Automatic on/off headlights	■	■	■
Halogen projector headlights	■	■	
LED headlights with LED signature			■
V-Motion grille with chrome accents	■	■	
V-Motion grille with dark chrome accents			■
Dual power outside mirrors	■	■	■
Heated outside mirrors with LED turn signal indicators			■
Black resin outside mirrors	■		
Body-color outside mirrors		■	
Black-painted outside mirrors			■
Black exterior door handles	■		
Body-color exterior door handles		■	■
Body-color rear spoiler			■
Carbon-fiber look rear diffuser	■	■	■

Comfort/Convenience	S	SV	SR
Air conditioning	■	■	
Automatic Temperature Control			■
In-cabin microfilter	■	■	■
Power windows with driver's one-touch auto-up/down	■	■	■
Power door locks with speed-sensing auto-locking feature	■	■	■
Rear Door Alert ²³		■	■
Nissan Intelligent Key® with Push Button Ignition		■	
Nissan Intelligent Key® with Push Button Ignition and front-door request switch			■
Remote Engine Start System with Intelligent Climate Control ²⁴			■
Tilt and telescoping steering column	■	■	■
Center console with armrest and storage		■	■
Sun visors with vanity mirrors and extensions	■	■	■
Front map lights	■	■	■
12-volt DC power outlet	■	■	■

Seating/Appointments	S	SV	SR
6-way manual adjustable driver's seat	■	■	■
4-way manual adjustable front-passenger's seat	■	■	■
Cloth seat trim	■		
Premium cloth seat trim		■	
Sport cloth seat trim			■
Prima-Tex®-appointed dash trim			■
Heated front seats			■
Leather-wrapped steering wheel			■
Matte carbon-fiber look interior door trim	■	■	■
Chrome interior door handles		■	■
60/40-split fold-down rear seatbacks	P	■	■

Infotainment	S	SV	SR
7" Advanced Drive-Assist® Display ⁵	■	■	■
7" Color touch-screen display		■	
NissanConnect® 7" color touch-screen display ⁶	P	■	
NissanConnect® 8" color touch-screen display ⁶			■

Infotainment (continued)	S	SV	SR
Apple CarPlay® integration ⁶	P	■	■
Android Auto™ compatibility ⁶	P	■	■
NissanConnect® Services powered by SiriusXM with trial access to 5-year Select and 3-year Premium packages ⁶			■
Siri® Eyes Free ⁶	■	■	■
Hands-free Text Messaging Assistant ⁸	■	■	■
Bluetooth® Hands-free Phone System ⁶	■	■	■
AM/FM audio system with four speakers	■	■	
AM/FM audio system with six speakers			■
SiriusXM with 3-month subscription included ⁶			■
Voice Recognition ⁷	■	■	■
Auxiliary audio input jack ²	■	■	
Three USB-A ports ²	■		
One USB-A port and two USB-C ports ²		■	
One USB-A port and three USB-C ports ²			■
Wireless charger ²		■	■
Streaming Audio via Bluetooth® ⁶	■	■	■
Steering wheel-mounted audio controls	■	■	■

Safety/Security	S	SV	SR
Nissan Advanced Air Bag System with dual-stage supplemental front air bags with seat-belt and occupant-classification sensors ¹⁹	■	■	■
Seat-mounted driver and front-passenger side-impact supplemental air bags ¹⁹	■	■	■
Seat-mounted rear-passenger side-impact supplemental air bags ¹⁹	■	■	■
Driver and front-passenger supplemental knee air bags ¹⁹	■	■	■
Roof-mounted curtain side-impact supplemental air bags for front- and rear-seat outboard occupant head protection ¹⁹	■	■	■
3-point ALR/ELR seat belt system (ELR only for driver)	■	■	■
Front and rear outboard seat belts with pretensioners and load limiters	■	■	■
LATCH System (Lower Anchors and Tethers for Children)	■	■	■
Zone Body construction with front and rear crumple zones	■	■	■
Hood buckling creases and safety stops	■	■	■
Child safety rear door locks	■	■	■
Power windows lock-out button	■	■	■
Energy-absorbing steering column	■	■	■
Tire Pressure Monitoring System (TPMS) with Easy-Fill Tire Alert ^{20, 21}	■		
Tire Pressure Monitoring System (TPMS) with individual tire pressure display and Easy-Fill Tire Alert ^{20, 21}		■	■
Nissan Vehicle Immobilizer System	■	■	■

DIMENSIONS/CAPACITIES/WEIGHTS/MPG

Exterior Dimensions — Inches	S	SV	SR
Wheelbase	103.1	103.1	103.1
Overall length	177	177	177
Overall width	68.5	68.5	68.5
Overall height	57.5	57.5	57.7
Track width (front/rear)	59.8/60.2	59.6/60	59.3/59.6

Interior Dimensions (front/rear) — Inches	S	SV	SR
Head room	39.5/36.3		
Leg room	44.5/31		
Hip room	50.9/50.1		
Shoulder room	53.1/53.6		

Aerodynamics — Cd	S MT	S CVT	SV	SR
Drag coefficient	0.32	0.32	0.32	0.29

Curb Weights — Lbs.	S	SV	SR
Base total	S	SV	SR
Manual transmission	2,598	-	-
Xtronic CVT®	2,651	2,670	2,717

EPA Fuel Economy Estimates ¹	S	SV	SR
City/Hwy/Combined mpg			
Manual transmission	27/35/30	-	-
Xtronic CVT®	32/40/35	32/40/35	32/40/35

NISSAN ROADSIDE ASSISTANCE

Your peace of mind is on us. For 36 months or 36,000 miles, whichever comes first, your new Nissan is covered for the following:³¹

- Flat-tire changes
- Trip Interruption benefits
- Jump starts
- Vehicle lockouts
- Emergency fuel delivery

Follow Nissan on:



visit [NissanUSA.com/versa](https://www.nissanusa.com/versa)

PRINTED IN USA